

Welton Road, Brough, East Yorkshire, HU15 1AF

☎ 01482 669982

✉ [info@limbestateagents.co.uk](mailto:info@limbestateagents.co.uk)

🌐 [limbestateagents.co.uk](http://limbestateagents.co.uk)

**Limb**  
MOVING HOME



*6b West End Farm Close, South Cave, East Yorkshire, HU15 2ED*

- 📍 Detached House
- 📍 Bespoke Design
- 📍 High End Spec.
- 📍 Council Tax Band = TBC

- 📍 5 Bed
- 📍 Living Kitchen
- 📍 Gated
- 📍 Freehold/EPC = TBC

*Offers Over £799,950*

## INTRODUCTION

This stunning, bespoke five-bedroom recently built detached house has been thoughtfully designed with a striking, high-end contemporary specification. This exceptional detached home is nestled within a gated development of just two properties near the entrance to Cave Castle. Offering a spacious and well-planned layout extending to around 3,00sq.ft., the property features an impressive entrance reception with a galleried landing, accessed via a sleek glass and oak detailed staircase. At the heart of the home is a breathtaking 28'8" x 16'1" (approx.) living kitchen, complete with a grand island and bi-fold doors that open seamlessly to the rear garden also together with a wide opening to the dining room again with bi-fold doors. The formal lounge is a generously sized room and an ideal tranquil retreat. Practicalities are met with a separate utility room and a cloakroom/W.C.

Upstairs, five well-proportioned bedrooms await, two of which boast en-suite facilities, complemented by a luxurious family bathroom. The home benefits from gas-fired underfloor heating on the ground floor and radiator heating upstairs, alongside high-quality uPVC double glazing. The kitchen is fitted with premium appliances, and the majority of the sanitary ware is from Villeroy & Boch. Set on a generous plot, the property offers excellent frontage parking and a spacious rear garden, making it an ideal blend of style, comfort, and practicality. This is an outstanding property of which viewing is strongly recommended.

## WARRANTY

The property will be conveyed with the remainder of a 10 year NHBC warranty.

## LOCATION

The village of South Cave dates back to the 11th century and is listed in the doomsday book. An interesting piece of local history is that George Washington's great grandfather once lived at the magnificent Cave Castle.

The picturesque village of South Cave is situated at the foot of the Yorkshire Wolds, approximately 14 miles to the west of Hull and just 10 miles from the historic market town of Beverley.

This is a great location for the commuter, family or country lover alike. Instant access to the A63/M62 motorway network makes many regional and national business centres such as Leeds, Sheffield and Manchester easily accessible. The nearby village of Brough has a mainline railway station with regular services to Hull, Leeds, Manchester, Doncaster, York and London Kings Cross (approx 2 hours). Overseas travel is also made easy with Humberside Airport just 20 miles away, Doncaster Sheffield airport 38 miles away and Leeds Bradford airport is just 59 miles away. Thus, the village provides excellent links both locally and nationally.

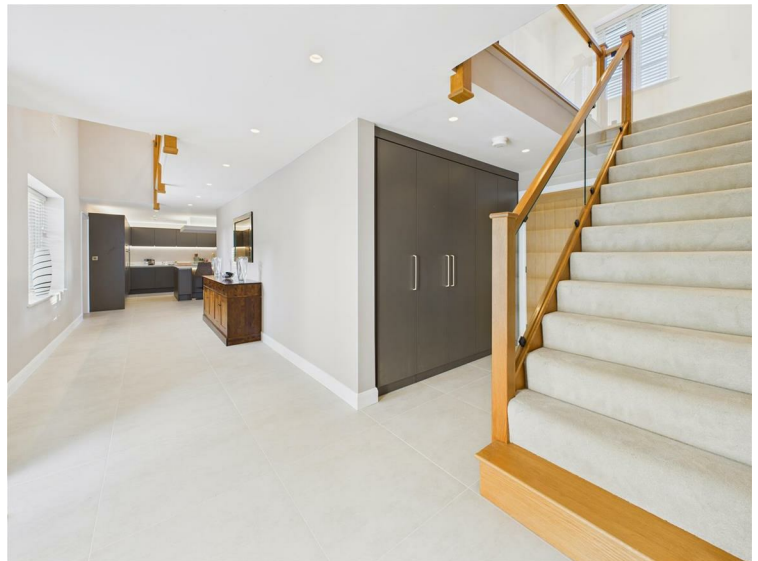
Beverley - 10 miles  
Hull - 14 miles  
Humberside Airport - 20 miles  
York - 28 miles  
Doncaster - 37 miles  
Leeds - 50 miles

## ROOMS AND DIMENSIONS

ENTRANCE RECEPTION - 7.987m x 2.354m approx. (26'2" x 7'8" approx.)  
 CLOAKS/W.C. - 2.712m x 1.151m approx. (8'10" x 3'9" approx.)  
 LIVING ROOM- 6.759M x 3.910M approx. ( 22'2" x 12'9" approx.)  
 SITTING/DINING ROOM - 5.06m x 3.805m approx. (16'7" x 12'5" approx.)  
 LIVING KITCHEN - 8.747m x 4.910m approx. (28'8" x 16'1" approx.)  
 UTILITY - 3.625m x 2.387m approx. (11'10" x 7'9" approx.)  
 FIRST FLOOR  
 LANDING  
 BEDROOM 1 - 4.91m x 4.547m approx. (16'1" x 14'11" approx.)  
 EN-SUITE - 3.072m x 2.225m approx. (10'0" x 7'3" approx.)  
 BEDROOM 2 - 4.210m x 3.817m approx. (13'9" x 12'6" approx.)  
 EN-SUITE  
 BEDROOM 3 - 3.382m x 3.910m approx. ( 11'1" x 12'9" approx.)  
 BEDROOM 4 - 3.392m x 3.910m approx. (11'1" x 12'9" approx.)  
 BEDROOM 5 - 4.91m x 4.287m approx. (16'1" x 14'0" approx.)  
 BATHROOM - 3.222m x 3.012m approx. (10'6" x 9'10" approx.)  
 GARAGE - 6.427m x 6.627m approx. (21'1" x 21'8" approx.) (external)

## HALLWAY

A beautiful tiled hallway extends throughout and in an open plan style into the living kitchen. There are recessed downlighters to the ceiling and an oak and glass detailed staircase leads up to the first floor. A series of contemporary cloaks cupboards have been fitted.





## WC

With Villeroy and Boch WC, wash hand basin in cabinet, tiling to the walls and floor.



## LOUNGE

Window to front and bi-fold doors to the rear. Accessed via double oak doors from the hallway.



## KITCHEN/SITTING

An extensive range of contemporary fitted handleless units with shadow detailing, grand island all complete with quartz work surfaces including a breakfast bar peninsular. Appliances include twin ovens, combination microwave, induction hob with ceiling mounted extractor above. Integrated dishwasher, fridge, freezer, copper double sink with matching mixer tap. This stunning living kitchen is the heart of the home and has a beautiful tiled floor with underfloor heating and bi-fold doors leading out to a rear patio. A wide opening leads through to the dining room.





## SITTING AREA



## DINING ROOM

Bi-fold doors leading out to the rear patio. Beautiful tiled floor.



## UTILITY

Fitted units, quartz work surfaces, plumbing for automatic washing machine and space for dryer. Wall mounted gas fired central heating boiler. Internal door through to garage.

## FIRST FLOOR

### GALLERIED LANDING

With oak and glass detailed balustrade to both staircase and double height gallery.



## BEDROOM 1

Extensively fitted with a range of wardrobes and drawers. Window to rear elevation.



## EN-SUITE

With Villeroy and Boch concealed flush WC and matching wash hand basin in fitted cabinet. Walk in shower area with rain head and hand held shower system, glazed partition. Beautiful tiling to the walls and floor, heated towel rail.



## BEDROOM 2

Window to rear elevation.



## EN-SUITE

A stunning en-suite with Villeroy and Boch concealed flush WC, wash hand basin set in cabinet, shower enclosure with rain head and hand held shower system. Beautiful tiling to the walls and floor.



## BEDROOM 3

Window to rear elevation.



## BEDROOM 4

Window to front elevation.

## BEDROOM 5

Window to front elevation.

## BATHROOM

A stunning suite comprising a freestanding Villeroy and Boch bath with wall mounted tap stand, concealed flush WC, Utopia wash hand basin in stylish cabinet, large walk in shower area with rain head and hand held shower system, glazed partition. Beautiful tiling to the walls and floor. Heated towel rail.



## REAR VIEW



## PROPOSED FLOORPLAN

## TENURE

Freehold

## COUNCIL TAX BAND

From a verbal enquiry we are led to believe that the Council Tax band for this property is Band TBC. We would recommend a purchaser make their own enquiries to verify this.

## AGENTS NOTE

Whilst every effort is made to ensure the accuracy of these details, the building process is subject to continuous development of new products and processes and the developer reserves the right to change the specification and possibly the price structure without notice, prior to reservation.

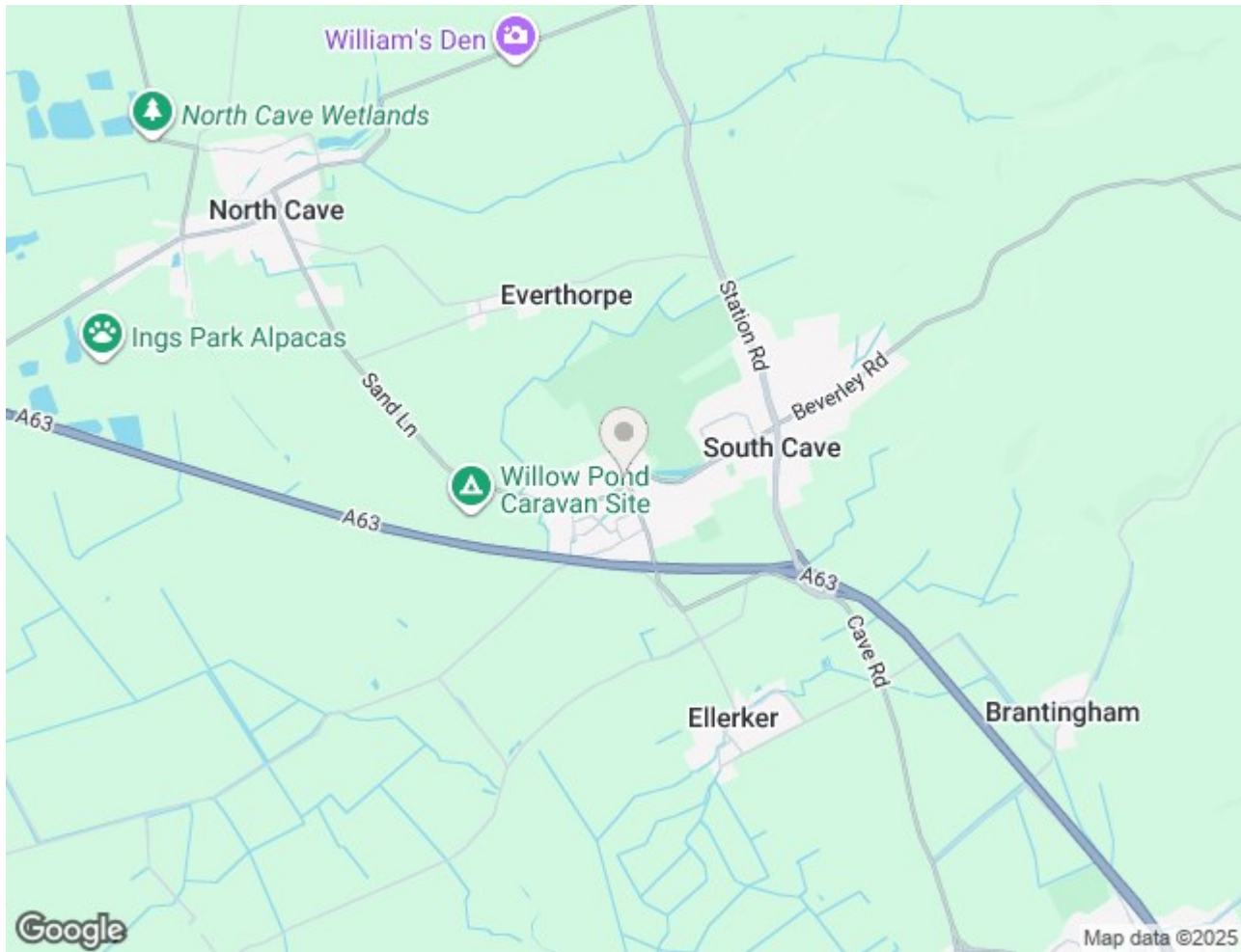
For clarification, we wish to inform prospective purchasers that we have not carried out a detailed survey, nor tested the services, appliances and specific fittings for this property. All measurements provided are approximate and for guidance purposes only. Floor plans are included as a service to our customers and are intended as a GUIDE TO LAYOUT only. NOT TO SCALE. Matthew Limb Estate Agents Ltd for themselves and for the vendors or lessors of this property whose agents they are give notice that (i) the particulars are set out as a general outline only for the guidance of intending purchasers or lessees, and do not constitute any part of an offer or contract (ii) all descriptions, dimensions, references to condition and necessary permissions for use and occupation, and other details are given in good faith and are believed to be correct and any intending purchaser or tenant should not rely on them as statements or representations of fact but must satisfy themselves by inspection or otherwise as to the correctness of each of them (iii) no person in the employment of Matthew Limb Estate Agents Ltd has any authority to make or give any representation or warranty whatever in relation to this property. If there is any point which is of particular importance to you, please contact the office and we will be pleased to check the information, particularly if you contemplate travelling some distance to view the property.

## VIEWING

Strictly by appointment through the agent. Brough Office 01482 669982.

## VALUATION SERVICE

If you have a property to sell we would be delighted to provide a free/no obligation valuation and marketing advice. Call us now on 01482 669982.








Total area: approx. 328.7 sq. metres (3538.3 sq. feet)  
6b West End Farm Close

## Energy Efficiency Rating

	Current	Potential
Very energy efficient - lower running costs		
(92 plus) <b>A</b>	<b>96</b>	<b>98</b>
(81-91) <b>B</b>		
(69-80) <b>C</b>		
(55-68) <b>D</b>		
(39-54) <b>E</b>		
(21-38) <b>F</b>		
(1-20) <b>G</b>		
Not energy efficient - higher running costs		
<b>England &amp; Wales</b>	EU Directive 2002/91/EC	

## Environmental Impact (CO<sub>2</sub>) Rating

	Current	Potential
Very environmentally friendly - lower CO <sub>2</sub> emissions		
(92 plus) <b>A</b>		
(81-91) <b>B</b>		
(69-80) <b>C</b>		
(55-68) <b>D</b>		
(39-54) <b>E</b>		
(21-38) <b>F</b>		
(1-20) <b>G</b>		
Not environmentally friendly - higher CO <sub>2</sub> emissions		
<b>England &amp; Wales</b>	EU Directive 2002/91/EC	